

## Adenoviral Knockdown Virus Data Sheet

### Vector Information

Vector: E1/E3 deleted adenoviral serotype 5 vector  
 Expression cassette: shRNA under control of human U6 promoter

### Target Information

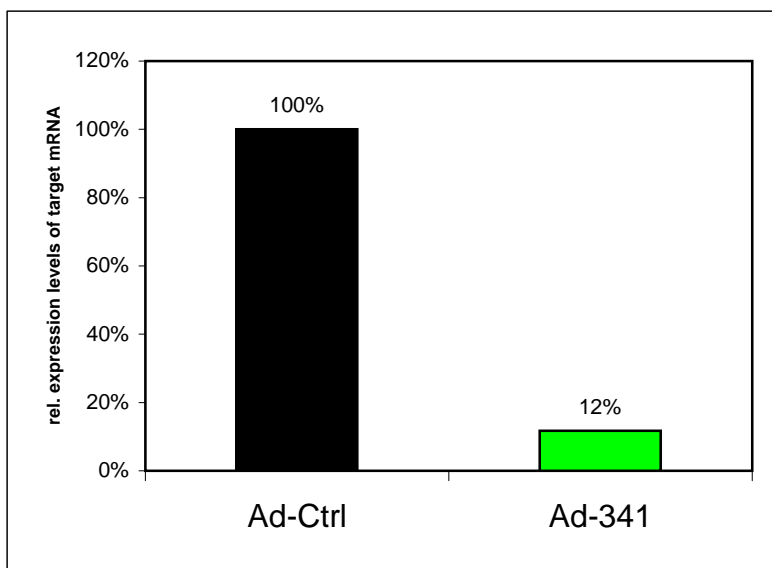
Target Gene: Catalase  
 Specimen: Homo sapiens  
 RefSeq#: NM\_001752

### Validation

Validation Method: qRT-PCR, Relative Quantification  
 Cell line used for validation: BT20  
 RNA prepared: 48h post transduction  
 Total RNA used in RT: 1 µg  
 cDNA Primer: OligodT/Random Hexamer  
 Real Time Platform: Light Cycler 480 (Roche)  
 Detection Method: SYBR I  
 Reference Gene: Topoisomerase 1 (TOP1)  
 Amplicon Integrity verified by: Melting Point Analysis

### Results

	CP Target	CP Ref	Delta CP	Delta CP rel to Ctrl	%Target expr rel to Ctrl
Ad-Ctrl	25,50	21,38	4,12	0,00	100%
Ad-341	28,13	20,92	7,21	3,10	12%



**Figure 1**

Reduction of Catalase-mRNA 48h after transduction with an adenoviral vector expressing a target-specific shRNA in comparison to cells transduced with control vector